

N7A0101
DC~1GHz, 1W

Features:
* Low VSWR
* High Attenuation Flatness

Applications:
* Wireless
* Transmitter
* Laboratory Test
* Radar

Electrical

Frequency: DC~1GHz
Attenuation: 1, 2, 4, 8, 10, 16, 20dB
VSWR: 1.10 max.
Impedance: 75Ω
Average Power⁺¹: 1W@25°C
Peak Power⁺²: 0.5KW

[1] Derated linearly to 0.2W@125°C
[2] Pulse width: 5us, duty cycle: 0.2%.

Attenuation Accuracy

Frequency (GHz)	Attenuation Accuracy (±dB) vs. Attenuation (dB)			
	1/2/4/8	10	16	20
DC~1	±0.4	±0.5	±0.5	±1.0

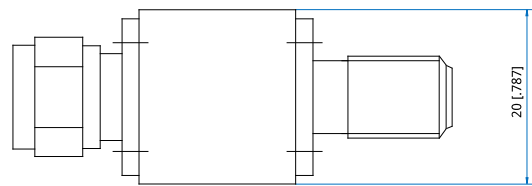
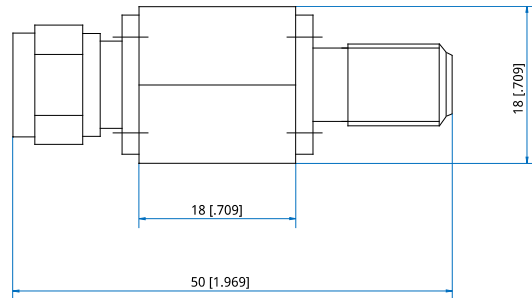
Mechanical

RF Connectors: F
Housing: Aluminum
Outer Conductor: Nickel plated brass
Male Inner Conductor: Gold plated brass
Female Inner Conductor: Gold plated brass

Environmental

Temperature: -55~+125°C

Outline Drawings



Outline A

Unit: mm [in]
Tolerance: ±5%

How To Order

N7A0101-X-Y-Z

X: Frequency in GHz
Y: Attenuation in dB
Z: Connector type

Connector naming rules:

F - F

Examples:

To order an attenuator, DC~1GHz, 10dB, F male to F female, specify N7A0101-1-10-F.

N7A0101-1
0.1~1GHz, 1W

Features:
* Low VSWR
* High Attenuation Flatness

Applications:
* Wireless
* Transmitter
* Laboratory Test
* Radar

Electrical

Frequency: 0.1~1GHz
Attenuation: 10, 20, 30, 40dB
VSWR: 1.15 max.
Impedance: 75Ω
Average Power⁺¹: 1W@25°C
Peak Power⁺²: 0.5KW

[1] Derated linearly to 0.2W@125°C
[2] Pulse width: 5us, duty cycle: 0.2%.

Attenuation Accuracy

Frequency (GHz)	Attenuation Accuracy (±dB) vs. Attenuation (dB)			
	10	20	30	40
0.1~1	±0.5	±1.0	±0.5	-2.0

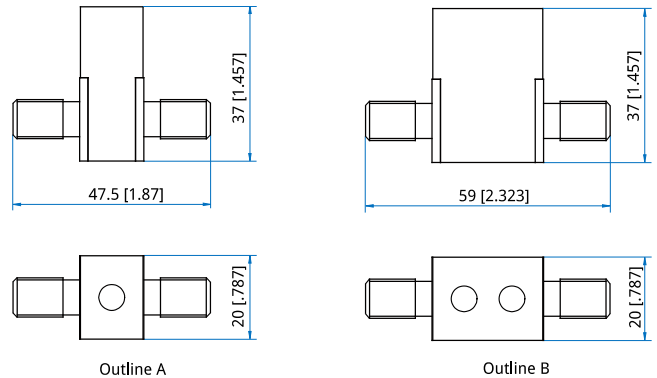
Mechanical

RF Connectors: F, N, SMA
Housing: Aluminum
Outer Conductor: Nickel plated brass
Male Inner Conductor: Gold plated brass
Female Inner Conductor: Gold plated beryllium copper

Environmental

Temperature: -55~+125°C

Outline Drawings



Unit: mm [in]
Tolerance: ±5%

How To Order

N7A0101-X-Y-Z-W

X: Frequency in GHz
Y: Attenuation in dB
Z: Connector type
W: Size type if applicable

Connector naming rules:
FF - F female(Outline A, B)
N - N

Size type naming rules:
A - Type A (Outline A)
B - Type B (Outline B)

Examples:

To order an attenuator, 0.1~1GHz, 10dB, F Female to F Female, type A, specify N7A0101-1-10-FFFF-A.

N7A0302
DC~3GHz, 2W

Features:
* Low VSWR
* High Attenuation Flatness

Applications:
* Wireless
* Transmitter
* Laboratory Test
* Radar

Electrical

Frequency: DC~3GHz
 Attenuation: 10, 20, 30dB
 VSWR: 1.15 max.@DC-1GHz
 1.25 max.@DC-3GHz
 Impedance: 75Ω
 Average Power⁺¹: 2W@25°C
 Peak Power⁺²: 0.5KW

[1] Derated linearly to 0.5W@125°C
 [2] Pulse width: 5us, duty cycle: 0.5%.

Attenuation Accuracy

Frequency (GHz)	Attenuation Accuracy (±dB) vs. Attenuation (dB)		
	10	20	30
DC~1	±0.4	±0.4	±0.4
DC-3	±0.4	±0.5	±0.6

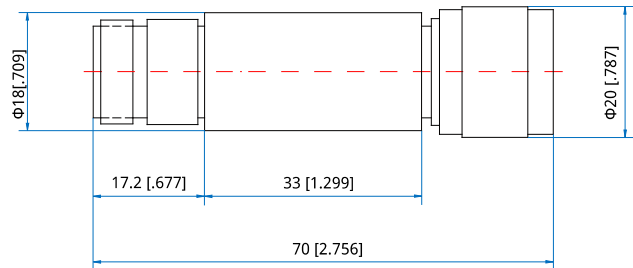
Mechanical

RF Connectors: F, N, BNC
 Housing: Aluminum
 Outer Conductor: Nickel plated brass
 Male Inner Conductor: Gold plated brass
 Female Inner Conductor: Gold plated beryllium copper

Environmental

Temperature: -55~+125°C

Outline Drawings



Outline A

Unit: mm [in]
 Tolerance: ±5%

How To Order

N7A0302-X-Y-Z

X: Frequency in GHz
 Y: Attenuation in dB
 Z: Connector type

Connector naming rules:

F - F
 N - N (Outline A)
 B - BNC

Examples:

To order an attenuator, DC~3GHz, 10dB, N Male to N Female, specify N7A0302-3-10-N.

NA0305
DC~3GHz, 5W

Features:
* Low VSWR
* High Attenuation Flatness

Applications:
* Wireless
* Transmitter
* Laboratory Test
* Radar

Electrical

Frequency: DC~3GHz
 Attenuation: 10, 20, 30dB
 VSWR: 1.15 max.@DC-1GHz
 1.25 max.@DC-3GHz
 Impedance: 75Ω
 Average Power⁺¹: 5W@25°C
 Peak Power⁺²: 1KW

[1] Derated linearly to 0.5W@125°C
 [2] Pulse width: 5us, duty cycle: 0.5%.

Attenuation Accuracy

Frequency (GHz)	Attenuation Accuracy (±dB) vs. Attenuation (dB)		
	10	20	30
DC~1	±0.4	±0.4	±0.4
DC-3	±0.4	±0.5	±0.6

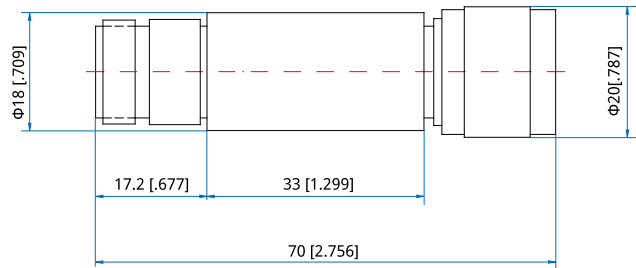
Mechanical

RF Connectors: F, N, BNC
 Housing: Aluminum
 Outer Conductor: Nickel plated brass
 Male Inner Conductor: Gold plated brass
 Female Inner Conductor: Gold plated beryllium copper

Environmental

Temperature: -55~+125°C

Outline Drawings



Outline A

Unit: mm [in]
 Tolerance: ±5%

How To Order

N7A0305-X-Y-Z

X: Frequency in GHz
 Y: Attenuation in dB
 Z: Connector type

Connector naming rules:

F - F
 N - N (Outline A)
 B - BNC

Examples:

To order an 75Ω attenuator, DC~3GHz, 10dB, N male to N female, specify N7A0305-3-10-N.