

NH400

Flexible, Alternate to semi-rigid cable

Features:
 * Phase Stability
 * Low PIM

Applications:
 * Phased-array Radar
 * Interconnection in and between equipment

Electrical

Frequency: DC~33GHz
 Cut-off Frequency: 34GHz
 Impedance: 50Ω
 Velocity of Propagation: 70%
 Shielding Effectiveness: 90dB min.
 Voltage Withstand: 1500V DC

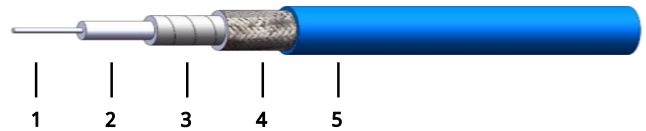
Mechanical

Bend Radius (installation): 20.0mm
 Bend Radius (repeated): 40.0mm
 Weight: 49g/m

Environmental

Temperature: -55~+165°C

Construction



No.	Name	Size (mm)	Material
1	Inner Conductor	0.94	Silver-plated copper
2	Dielectric	2.97	PTFE
3	Inner Shield	3.25	Silver-plated copper tape
4	Outer Shield	3.55	Silver-plated copper braid
5	Jacket	4.00	FEP

Attenuation & Power Handling

Frequency (GHz)	0.3	0.5	1	2.4	3	6	8	10	12.4	18	26.5
Attenuation*1 (dB/100m)	19.9	26.2	38.2	62.5	71.1	107.5	128.3	147.6	169.4	211.0	265.0
Average Power*2 (W)	512	423	290	177	156	103	86	75	65	51	39

[1] VSWR:1.0; Ambient: +25°C (77°F)

[2] VSWR:1.0; Ambient: +40°C (104°F); Sea level

Calculate Cable Attenuation: Attenuation (dB/100m) = 1.082677 * √F (MHz) + 0.003937 * F (MHz)

Calculate Connector Attenuation: Attenuation (dB) = 0.03 * √F (GHz)

How To Order

NH400-X-Y-Z

X: Frequency in GHz

Y: Connector type

Z: Length in meters

Examples:

To order a NH400 cable assembly, DC-18GHz, SMA male to SMA female, 0.5 meter, specify NH400-18-SSF-0.5.

Connector naming rules:

3 - 3.5mm (26.5GHz, VSWR 1.3)

P - SMP (26.5GHz, VSWR 1.3)

A - SSMA (26.5GHz, VSWR 1.3)

S - SMA (26.5GHz, VSWR 1.3)

N - N (18GHz, VSWR 1.25)

X - MMCX (6GHz, VSWR 1.3)

M - MCX (6GHz, VSWR 1.3)

B - BNC (4GHz, VSWR 1.4)

D - SMB (4GHz, VSWR 1.25)

Female Connector - Add 'F' after connector name

Right Angle - Add 'R' after connector name (VSWR increase 0.1)

Mating Connector

NCK-MG-141-1
2.92mm male, Stainless steel



NCS-MG-141-3
SMA male, Stainless steel



NCS-MRB-141-4
SMA male, Right angle, Gold plated brass

NCS-MRG-141-3
SMA male, Right angle, Stainless steel

NCS-FB-141-1
SMA female, Gold plated brass



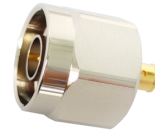
NCS-FL2B-141-1
SMA female, 2 - hole flange mount, Brass

NCS-FL4B-141-1
SMA female, 4- hole flange mount, Gold plated brass



NCS-FHB-141-1
SMA female, Bulk head, Brass

NCN-MB-141-3
N male, Nickel plated brass



NCN-MRB-141-1
N male, Right angle, Nickel plated brass



NCN-MRB-141-2
N male, Right angle, Gold plated brass



NCN-FB-141-1
N female, Nickel plated brass



NCB-MB-141-1
BNC male, Ternary alloy plated brass

