

NA11

1.0mm to 1.0mm

Features:
* Low VSWR

Applications:
* Wireless
* Transmitter
* Laboratory Test
* Radar

Electrical

Frequency: DC~110GHz
VSWR: 1.35 max.
Insertion Loss: 0.6dB max.
Impedance: 50Ω

Mechanical

RF Connectors: 1.0mm
Mating Life Cycle: 2000 cycles
Outer Conductor: Passivated SUS303 stainless steel or gold plated beryllium copper
Dielectric: PEEK or CPS or PEI
Inner Conductor: Gold plated beryllium copper

Environmental

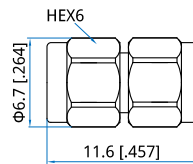
Temperature: -55~+85°C

How To Order

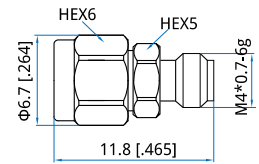
- NA11-MM** - 1.0mm(m) to 1.0mm(m), Outline A
- NA11-MF** - 1.0mm(m) to 1.0mm(f), Outline B
- NA11-FF** - 1.0mm(f) to 1.0mm(f), Outline C
- NA11H-FF** - 1.0mm(f) to 1.0mm(f), bulk head, Outline D
- NA11L-FF** - 1.0mm(f) to 1.0mm(f), flange mount, Outline E

Customization is available upon request.

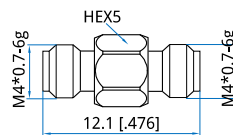
Outline Drawings



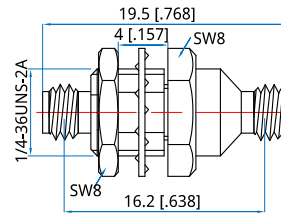
Outline A



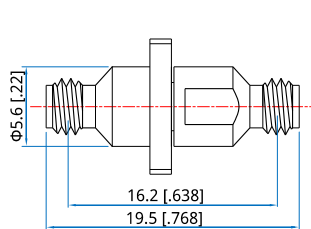
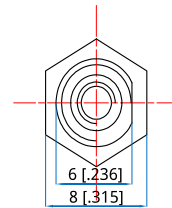
Outline B



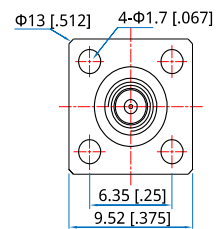
Outline C



Outline D



Outline E



Unit: mm [in]
Tolerance: ±0.2mm [±0.008in]