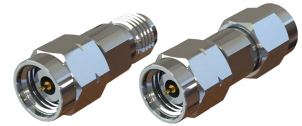


NA2S
2.4mm to SMA

Features:
* Low VSWR

Applications:
* Wireless
* Transmitter
* Laboratory Test
* Radar



Electrical

Frequency: DC~26.5GHz
VSWR: 1.2 max.
Impedance: 50Ω

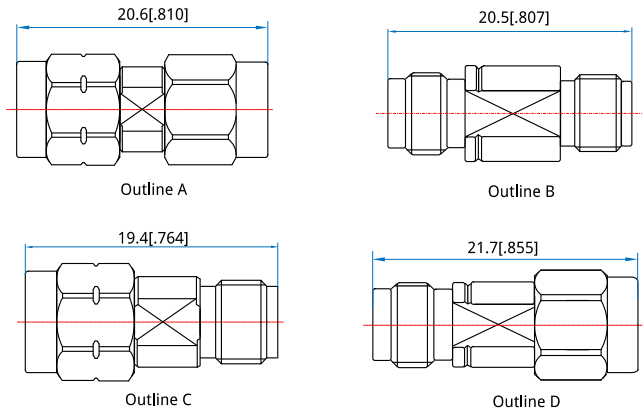
Mechanical

RF Connectors: 2.4mm
SMA
Mating Life Cycle: 500 cycles
Outer Conductor: Passivated stainless steel
Dielectric: PEI&PTFE
Inner Conductor: Gold plated beryllium copper

Environmental

Temperature: -55~+165°C

Outline Drawings



Unit: mm [in]
Tolerance: ±0.2mm [±0.008in]

How To Order

- NA2S-MM** - 2.4mm(m) to SMA(m), Outline A
- NA2S-FF** - 2.4mm(f) to SMA(f), Outline B
- NA2S-MF** - 2.4mm(m) to SMA(f), Outline c
- NA2S-FM** - 2.4mm(f) to SMA(m), Outline D

Customization is available upon request.