

### NA55

1.35mm to 1.35mm

Features:  
\* Low VSWR

Applications:  
\* Wireless  
\* Transmitter  
\* Laboratory Test  
\* Radar



#### Electrical

Frequency: DC~90GHz  
VSWR: 1.3 max.  
Impedance: 50Ω

#### Mechanical

RF Connectors: 1.35mm  
Mating Life Cycle: 500 cycles  
Outer Conductor: Passivated Stainless Steel  
Dielectric: PEI  
Inner Conductor: Gold plated beryllium copper

#### Environmental

Temperature: -55~+165°C

#### How To Order

**NA55-MM** - 1.35mm(m) to 1.35mm(m), Outline A

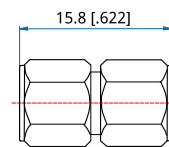
**NA55-MF** - 1.35mm(m) to 1.35mm(f), Outline B

**NA55-FF** - 1.35mm(f) to 1.35mm(f), Outline C

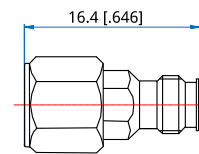
**NA55H-FF** - 1.35mm(f) to 1.35mm(f), Bulk head, Outline D

Customization is available upon request.

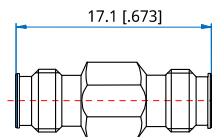
#### Outline Drawings



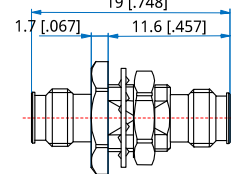
Outline A



Outline B  
19 [0.748]



Outline C



Outline D

Unit: mm [in]

Tolerance: ±0.2mm [±0.008in]