

NASB-B SMA to BNC

Features:
* Low VSWR

Applications:
* Wireless
* Transmitter
* Laboratory Test
* Radar



Electrical

Frequency: DC~3GHz (Outline E)
DC~4GHz (Outline F, G)
DC~6GHz
VSWR: 1.15 max. (Outline F, G)
1.25 max. (Outline E)
1.35 max.
Impedance: 50Ω

Mechanical

RF Connectors: SMA
BNC
Outer Conductor: Nickel plated brass
Dielectric: PTFE
Inner Conductor: Gold plated brass or gold plated phosphor copper

Environmental

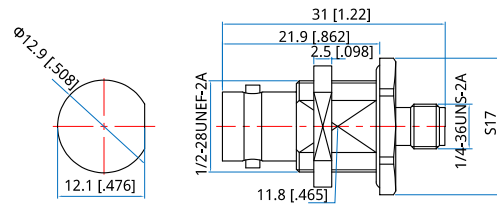
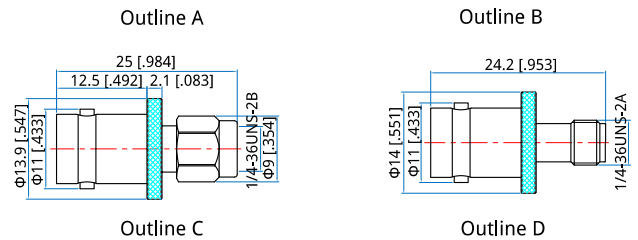
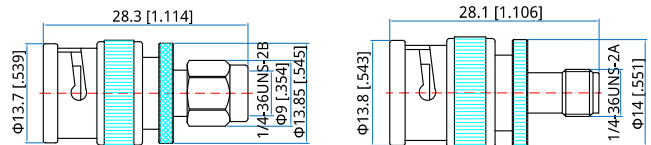
Operating Temperature: -55~+155°C

How To Order

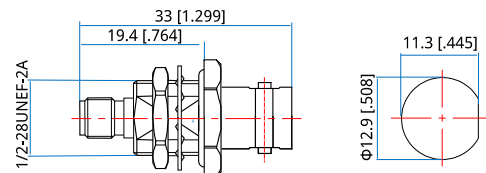
- NASB-MM-B** - SMA(m) to BNC(m), Outline A
- NASB-FM-B** - SMA(f) to BNC(m), Outline B
- NASB-MF-B** - SMA(m) to BNC(f), Outline C
- NASB-FF-B** - SMA(f) to BNC(f), Outline D
- NASBH-FF-B** - SMA(f) to BNC(f) bulk head, Outline E
- NASBH-FF-B-1** - SMA(f) to BNC(f) bulk head, Outline F
- NASBL-FF-B** - SMA(f) to BNC(f) flange mount, Outline G

Customization is available upon request.

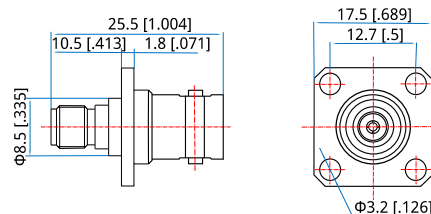
Outline Drawings



Outline E



Outline F



Outline G

Unit: mm [in]
Tolerance: $\pm 0.2\text{mm}$ [$\pm 0.008\text{in}$]