

## NASI-B SMA to BMA

Features:  
\* Low VSWR

Applications:  
\* Wireless  
\* Transmitter  
\* Laboratory Test  
\* Radar

### Electrical

Frequency: DC~6GHz  
DC~18GHz (Outline F)  
VSWR: 1.15 max.  
1.2 max.(Outline E)  
Impedance: 50Ω

### Mechanical

RF Connectors: SMA  
BMA  
Mating Life Cycle: 500 cycles  
Outer Conductor: Gold plated brass  
Ternary alloy plated brass (Outline G)  
Dielectric: PTFE  
Inner Conductor: Gold plated beryllium copper

### Environmental

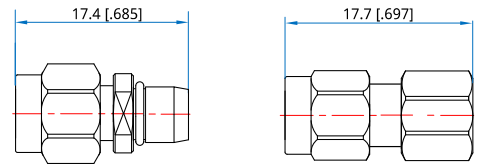
Temperature: -55~+165°C

### How To Order

- NASI-MM-B** - SMA(m) to BMA(m), Outline A
- NASI-MF-B** - SMA(m) to BMA(f), Outline B
- NASI-FM-B** - SMA(f) to BMA(m), Outline C
- NASI-FF-B** - SMA(f) to BMA(f), Outline D
- NASIH-FF-B** - SMA(f) to BMA(f), Bulk head, Outline E
- NASIL-FM-B** - SMA(f) to BMA(m), Flange mount, Outline F
- NASIL-FF-B-02** - SMA(f) to BMA(f), Flange mount, two holes, Outline G

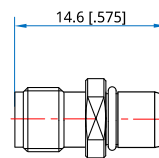
Customization is available upon request.

### Outline Drawings

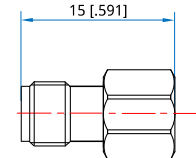


Outline A

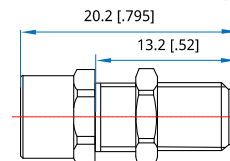
Outline B



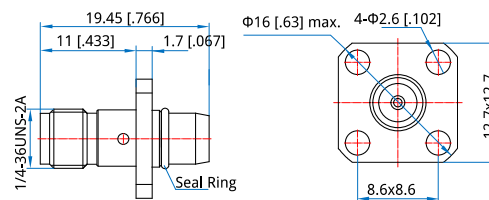
Outline C



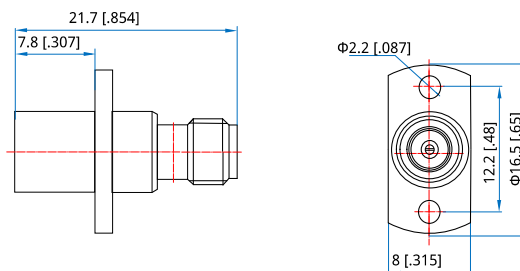
Outline D



Outline E



Outline F



Outline G

Unit: mm [in]  
Tolerance: ±0.2mm [±0.008in]