

NAUU
SSMB to SSMB

Features:
* Low VSWR

Applications:
* Wireless
* Transmitter
* Laboratory Test
* Radar

Electrical

Frequency: DC~6GHz
VSWR: 1.2 max.
Impedance: 50Ω

Mechanical

RF Connectors: SSMB
Mating Life Cycle: 500 cycles
Outer Conductor: Gold plated brass
Dielectric: PTFE
Inner Conductor: Gold plated beryllium copper

Environmental

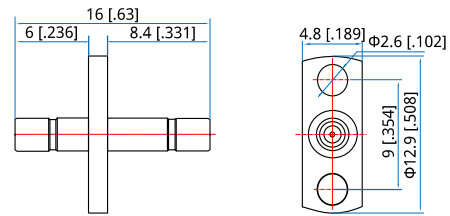
Temperature: -55~+165°C

How To Order

NAUUL-MM - SSMB(m) to SSMB(m), Flange mount, Outline A

Customization is available upon request.

Outline Drawings



Outline A

Unit: mm [in]

Tolerance: ±0.2mm [±0.008in]