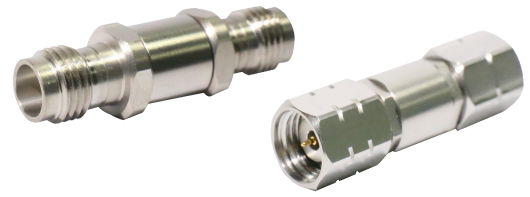


NAV2

1.85mm to 2.4mm

Features:
* Low VSWR

Applications:
* Wireless
* Transmitter
* Laboratory Test
* Radar



Electrical

Frequency: DC~50GHz
VSWR: 1.15 max.
Impedance: 50Ω

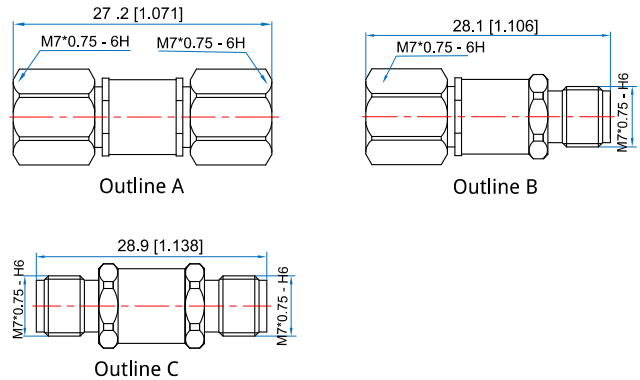
Mechanical

RF Connectors: 1.85mm
2.4mm
Mating Life Cycle: 2000 cycles
Outer Conductor: Passivated SUS303 Stainless Steel
Dielectric: PEI
Inner Conductor: Gold Plated Beryllium Copper

Environmental

Temperature: -55~+125°C

Outline Drawings



Unit: mm [in]

Tolerance: ±0.2mm [±0.008in]

How To Order

NAV2-MM - 1.85mm (m) to 2.4mm (m), Outline A

NAV2-MF - 1.85mm (m) to 2.4mm (f), Outline B

NAV2-FM - 1.85mm (f) to 2.4mm (m), Outline B

NAV2-FF - 1.85mm (f) to 2.4mm (f), Outline C

Customization is available upon request.