

NMS2F&B

DC~3GHz, SPDT

Features:
 * Low VSWR
 * Low Insertion Loss
 * High Isolation

Applications:
 * Wireless
 * Transmitter
 * Laboratory Test
 * Radar

Electrical

Frequency: DC~3GHz
 Impedance: 75Ω
 Power: 1W CW
 Voltage: 12V DC/50mA
 (Option: 24V DC)

Frequency range (GHz)	Insertion Loss (dB)	Isolation (dB)	VSWR
DC~1	0.4	60	1.4
1~2	0.5	45	1.6
2~3	0.8	35	1.7

Mechanical

Switching Sequence: Break Before Make
 Switching Time: 5mS max.
 Operation Life: 1000000 Cycles
 RF Connectors: F Female, BNC Female
 Power Supply & Control: Feed Through/Terminal Post
 Interface Connectors:
 Mounting: 2-Φ2.6mm Through-hole

Environmental

Temperature: -30~+75°C

How To Order

NMS2C-F-WXYZ

C: Connector Type.
 F: Frequency in GHz.
 W: Actuator Type. Failsafe: 0.
 X: Voltage. +12V: E, +24V: K.
 Y: Power Interface. Pin: 0.

Connector naming rules:

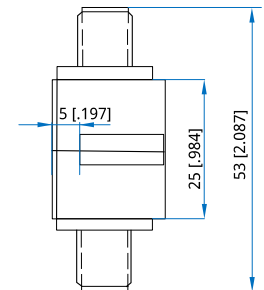
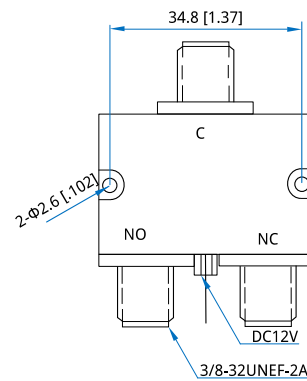
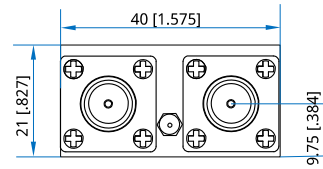
F - F Female(Outline A)
 B - BNC Female(Outline B)

Examples:

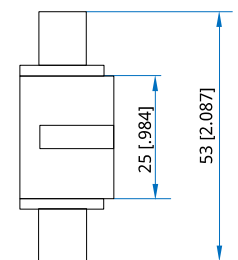
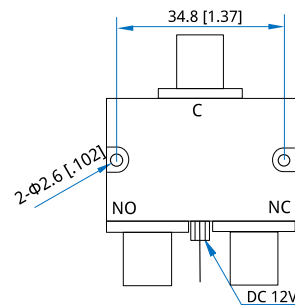
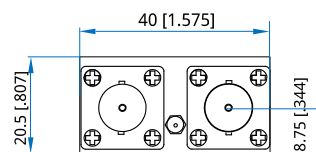
To order a SPDT switch, F Female, DC-3GHz, Failsafe, +12V, Pin, specify NMS2F-3-0E0.

Customization is available upon request.

Outline Drawings



Outline A



Outline B

Unit: mm [in]
 Tolerance: ±0.5mm [±0.02in]