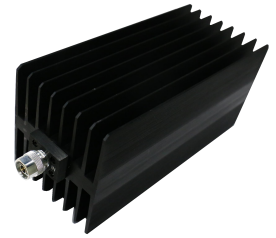


### NCT18K25

DC~18GHz, 250W



Features:  
 \* Low VSWR  
 \* Broadband

Applications:  
 \* Transmitters  
 \* Antennas  
 \* Laboratory Test  
 \* Impedance Matching

#### Electrical

Frequency Range: DC~18GHz  
 Average Power<sup>†</sup>: 250W@25°C  
 Impedance: 50Ω

[1] Derated linearly to 12.5W@120°C.

#### VSWR

Frequency (GHz)	VSWR (max.)
DC~4	1.2
4~8	1.25
8~12.4	1.35
12.4~18	1.45

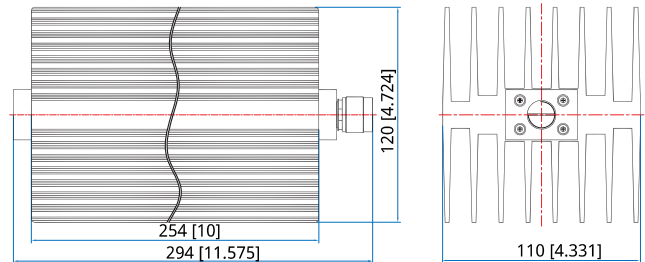
#### Mechanical

Size: 294\*110\*120mm  
 11.575\*4.331\*4.724in  
 Connector: N

#### Environmental

Temperature: -55~+125°C

#### Outline Drawings



Unit: mm [in]  
 Tolerance: ±1mm [±0.04in]

#### How To Order

**NCT18K25-X-Y**  
 X: Frequency in GHz  
 Y: Connector type

Connector naming rules:

N - N Male  
 NF - N Female

Examples:

To order a termination, DC-18GHz, N male, specify  
 NCT18K25-18-N  
 Customization is available upon request.