

NELC-1F-1

1.0mm Female, DC~110GHz

Features:
* Low VSWR

Applications:
* Wireless
* Radar
* Instruments
* Electronics

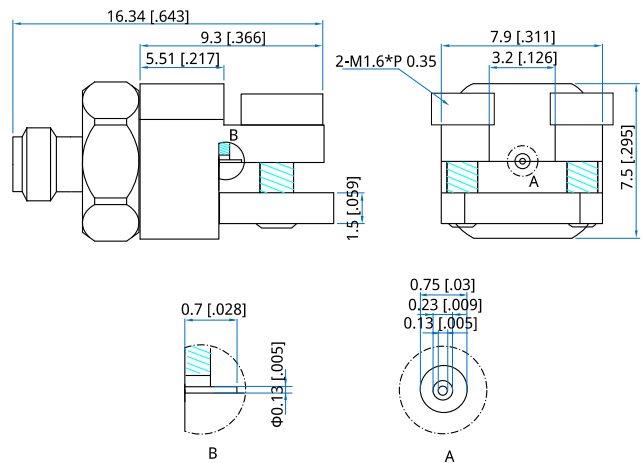
Electrical

Frequency: DC~110GHz
VSWR: 2 max.
Impedance: 50Ω

Mechanical

RF Connector: 1.0mm Female
Outer Conductor: Stainless steel
Inner Conductor: Gold plated beryllium copper

Outline Drawings



Unit: mm [in]
Tolerance: ±0.2mm [±0.008in]

How To Order

NELC-1F-1

Customization is available upon request.