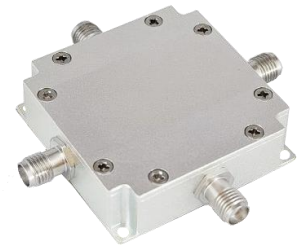


NIMA-MP2-BT-10-2150

0.01~2.15GHz

Features:
 * High Isolation
 * Low VSWR

Applications:
 * Wireless
 * Receiver
 * Laboratory Test
 * Communication



Description

NIMA-MP2-BT-10-2150 is an integrated microwave assembly which combines a 10~50MHz signal usually as clock input, 950~2150MHz signal and DC supply.

Electrical

Frequency (CLK):	10~50MHz
(RF):	950~2150MHz
(DC):	DC
Insertion Loss (RF):	0.8dB max.
(CLK):	0.5dB max.
Isolation:	40dB min.
VSWR (CLK):	1.25 max.
(RF):	1.5 max.
(SUM):	1.4 max.
	@10~50MHz&950~2150MHz
Impedance:	50Ω
Supply Voltage:	50V DC max.
Current:	2.5A max.

Absolute Maximum Ratings*1

RF Input Power:	30dBm
Voltage:	72V

[1] Permanent damage may occur if any of these limits are exceeded.

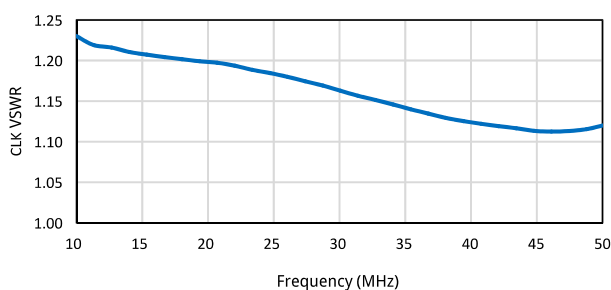
Mechanical

Size*1:	42*42*12mm 1.654*1.654*0.472in
Connector:	SMA Female

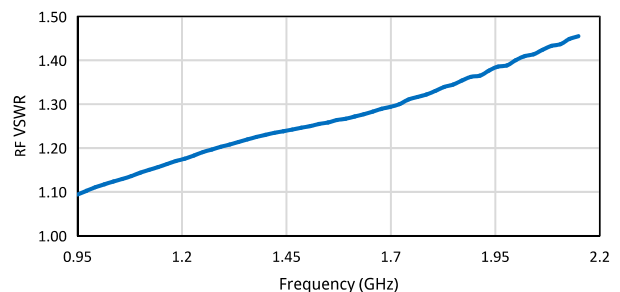
[1] Exclude connectors.

Typical Performance Curves

CLK VSWR vs. Frequency



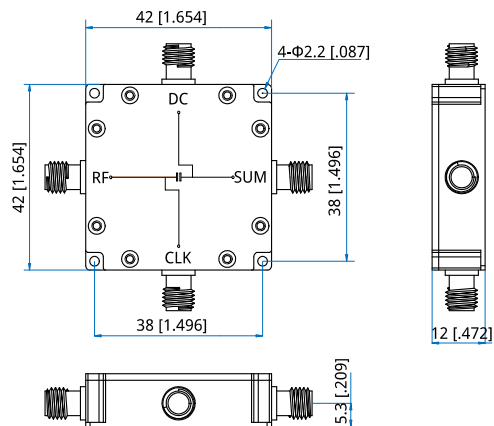
RF VSWR vs. Frequency



Environmental

Operating Temperature:	-35~+75°C
Non-operating Temperature:	-45~+85°C

Outline Drawings



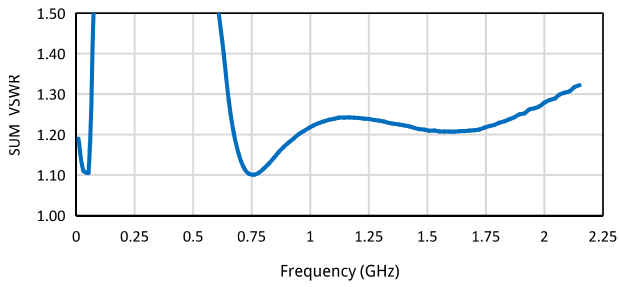
Unit: mm [in]
 Tolerance: ±0.5mm [±0.02in]

How To Order

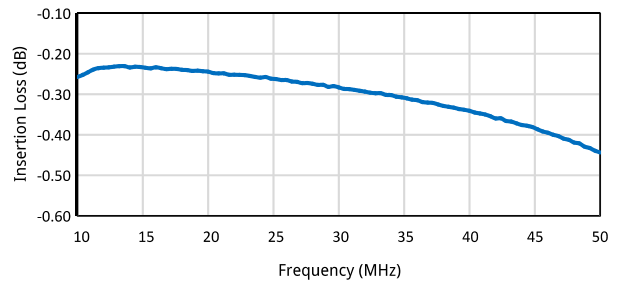
NIMA-MP2-BT-10-2150

Customization is available upon request.

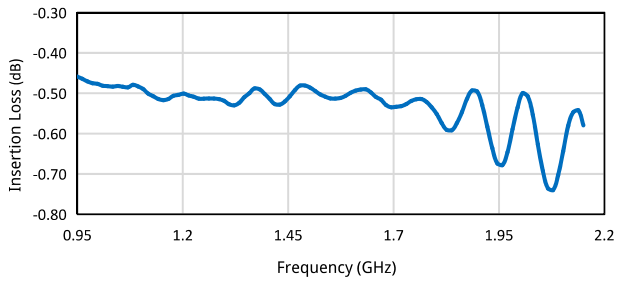
SUM VSWR vs. Frequency



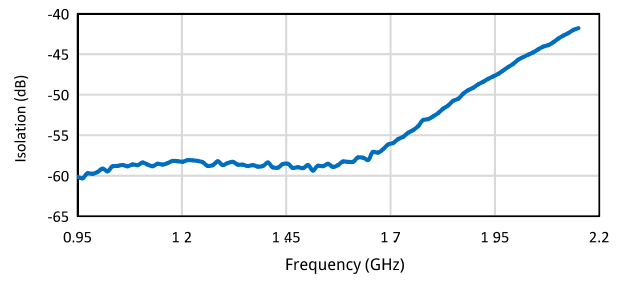
CLK-SUM Insertion Loss vs. Frequency



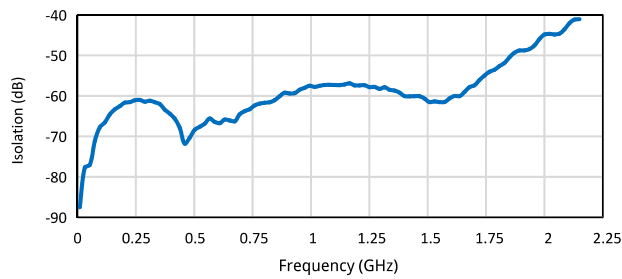
RF-SUM Insertion Loss vs. Frequency



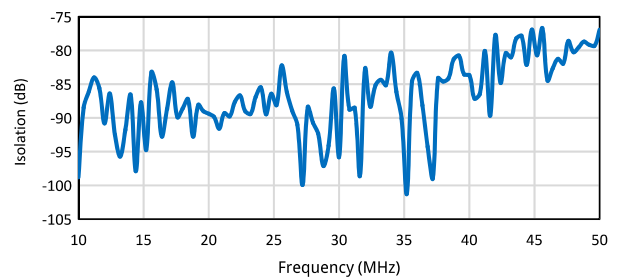
CLK-SUM Isolation vs. Frequency



RF-CLK Isolation vs. Frequency



RF-SUM Isolation vs. Frequency

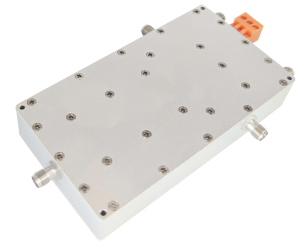


NIMA-VA-S-0.1-500

0.1~500MHz

Features:
 * Broad Band
 * Low Noise

Applications:
 * Wireless
 * Receiver
 * Laboratory Test
 * Radar



Electrical

Frequency:	0.1~500MHz
Insertion Loss:	5dB typ.
Isolation:	80dB typ.
Attenuation Range:	0~50dB
VSWR:	2 typ.
Switch Time:	100ns max.
Impedance:	50Ω
Supply Voltage:	+5V DC
Current:	100mA typ.
Control:	TTL High - 1 TTL Low/NC - 0

Absolute Maximum Ratings*1

RF Input Power:	18dBm
Voltage:	-0.5~+7V

[1] Permanent damage may occur if any of these limits are exceeded.

Mechanical

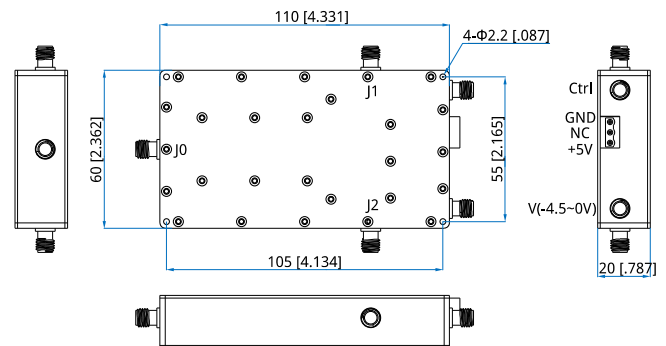
Size*1:	110*60*20mm 4.331*2.362*0.787in
RF Connectors:	SMA Female
Mounting:	4-Φ2.2mm through-hole

[1] Exclude connectors.

Environmental

Operating Temperature:	-35~+75°C
Non-operating Temperature:	-45~+85°C

Outline Drawings



Unit: mm [in]
 Tolerance: ±0.5mm [±0.02in]

Pin Numbering

Pin	Function
Ctrl	TTL High - 1 (J0~J2) TTL Low/NC - 0 (J0~J1)
GND	GND
NC	No Connection
+5V	Power Supply
V	Attenuation Control Voltage: -4.5~0V

How To Order

[NIMA-VA-S-0.1-500](#)

Customization is available upon request.

Typical Performance Curves

