

NWPD4-13750-14500-1K6-75

4-Way, 13.75~14.5GHz, 1600W, WR-75

Features:
 * Small Size
 * Low Insertion Loss

Applications:
 * Amplifiers
 * Mixers
 * Antennas
 * Laboratory Test

Electrical

| | |
|------------------|---------------------------------------|
| Frequency: | 13.75~14.5GHz |
| Insertion Loss: | 0.3dB max. |
| VSWR: | 1.3 max. |
| Phase Balance: | ±3° |
| Power @SUM Port: | 1600W as divider 1600W as combiner |

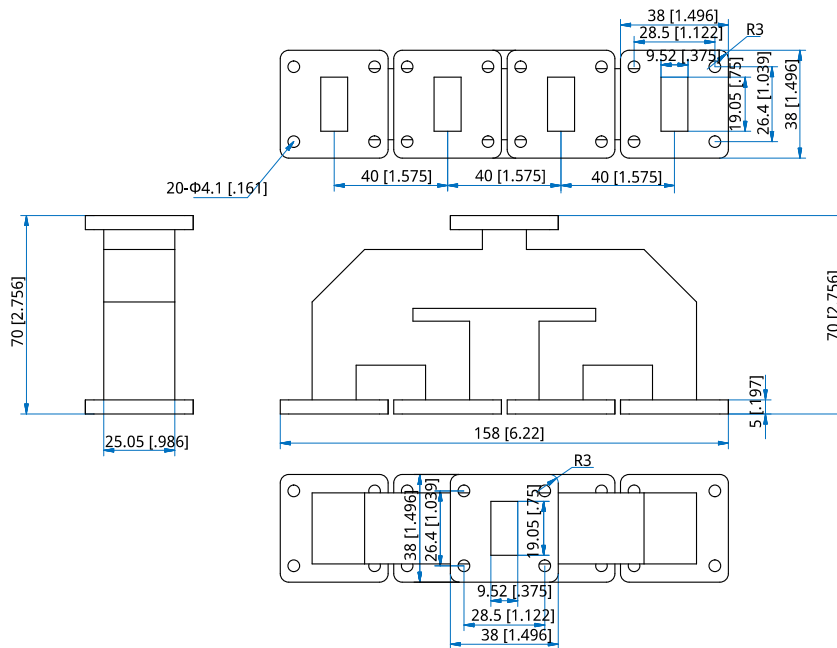
Mechanical

| | |
|-----------------|------------------------|
| Waveguide Size: | WR-75 (BJ120) |
| Flange: | FBP120 |
| Material: | Aluminium |
| Finish: | Conductive oxidation |
| Coating: | Black paint |
| Mounting: | 20-Φ4.1mm through-hole |

Environmental

Operating Temperature: -40~+85°C

Outline Drawings



Outline A

Unit: mm [in] Tolerance: ±0.5mm [±0.02in]

How To Order

NWPD4-13750-14500-1K6-75-Y-Z

Y: Material

Z: Flange type

Material naming rules:

A - Aluminium (Outline A)

Flange naming rules:

1 - FBP (Outline A)

Examples:

To order a Waveguide Power Dividers & Magic Tees, 13.75~14.5GHz, 1600W, WR-75, Aluminium, FBP120, specify NWPD4-13750-14500-1K6-75-A-1.

Customization is available upon request.