

## NWPD6-27000-31000-2K-34

6-Way, 27~31GHz, 2000W, WR-34

Features:  
 \* Small Size  
 \* Low Insertion Loss

Applications:  
 \* Amplifiers  
 \* Mixers  
 \* Antennas  
 \* Laboratory Test

### Electrical

Frequency:	27~31GHz
Insertion Loss:	0.3dB max.
VSWR:	1.3 max.
Phase Balance:	±6°
Power @SUM Port:	2000W as divider 2000W as combiner

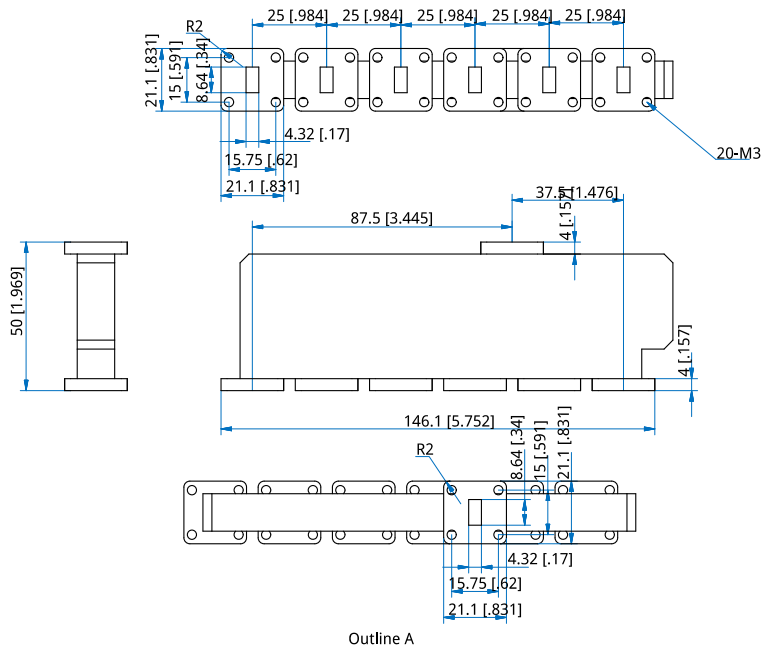
### Mechanical

Waveguide Size:	WR-34 (BJ260)
Flange:	FBP260
Material:	Aluminium
Finish:	Silvering
Coating:	Black paint
Mounting:	20-M3mm through-hole

### Environmental

Operating Temperature: -40~+85°C

### Outline Drawings



Unit: mm [in] Tolerance: ±0.5mm [±0.02in]

### How To Order

NWPD6-27000-31000-2K-34-Y-Z

Y: Material  
 Z: Flange type

Material naming rules:  
 A - Aluminium (Outline A)

Flange naming rules:  
 1 - FBP (Outline A)

Examples:  
 To order a Waveguide Power Dividers & Magic Tees, 27~31GHz, 2000W, WR-34, Aluminium, FBP260, specify NWPD6-27000-31000-2K-34-A-1.

Customization is available upon request.